

INSTALLATION GUIDE

&

USER MANUAL

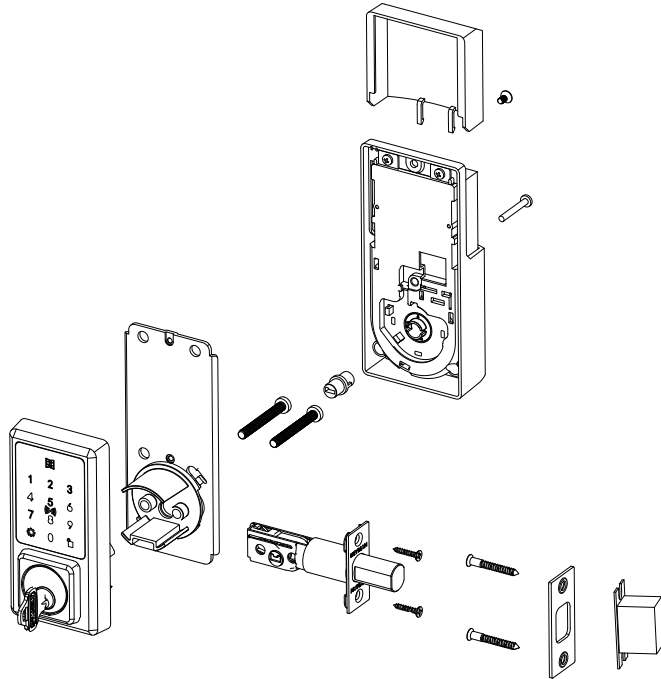
DEADBOLT Series

INSTALLATION GUIDE

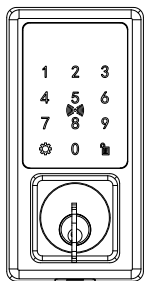
DEADBOLT Series

OVERVIEW

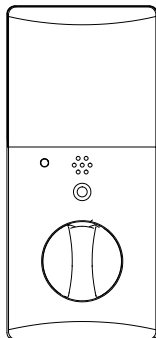
No handing design, auto adjust handing.



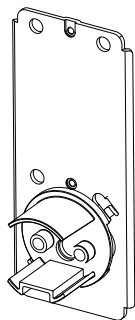
CONTENT



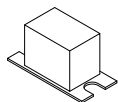
**Exterior
Assembly**



**Interior
Assembly**

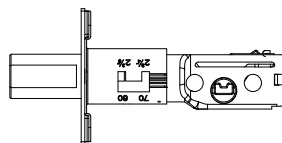


**Mounting
Plate**



Dust Box

Accessories Box



Latch



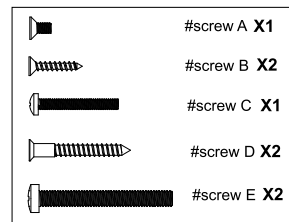
Strike Plate



**Rotation
Piece**



Key x 2



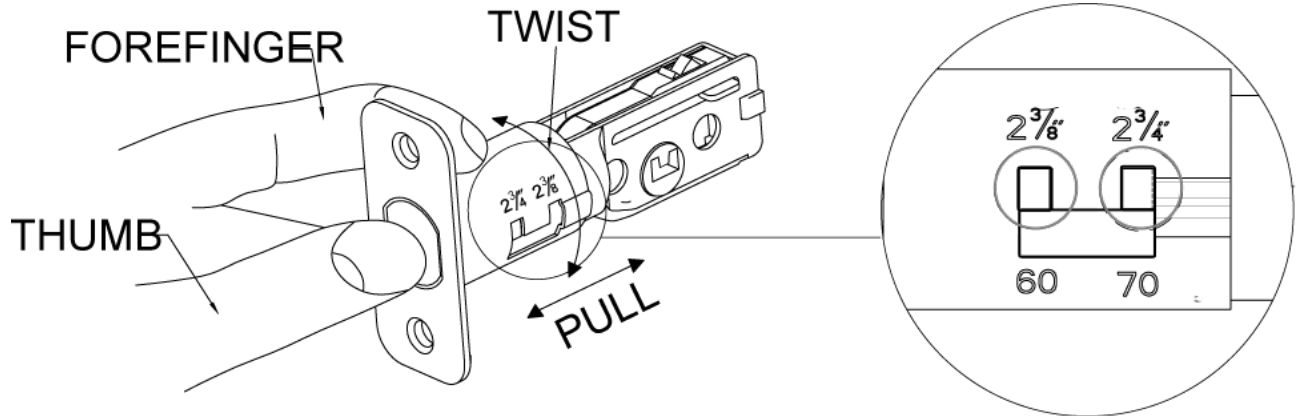
Screw Pack

CHECK LIST

- 1. Exterior Assembly
- 2. Interior Assembly
- 3. Mounting Plate
- 4. Dust Box
- 5. Accessories Box
 - 5.1 Latch
 - 5.2 Strike Plate
 - 5.3 Rotation Piece
 - 5.4 Key
 - 5.5 Screw Pack

CAUTION: Please follow this Installation Guide. Warranty NOT involve any damage caused by installation error!

Step 1 Adjust Latch Backset

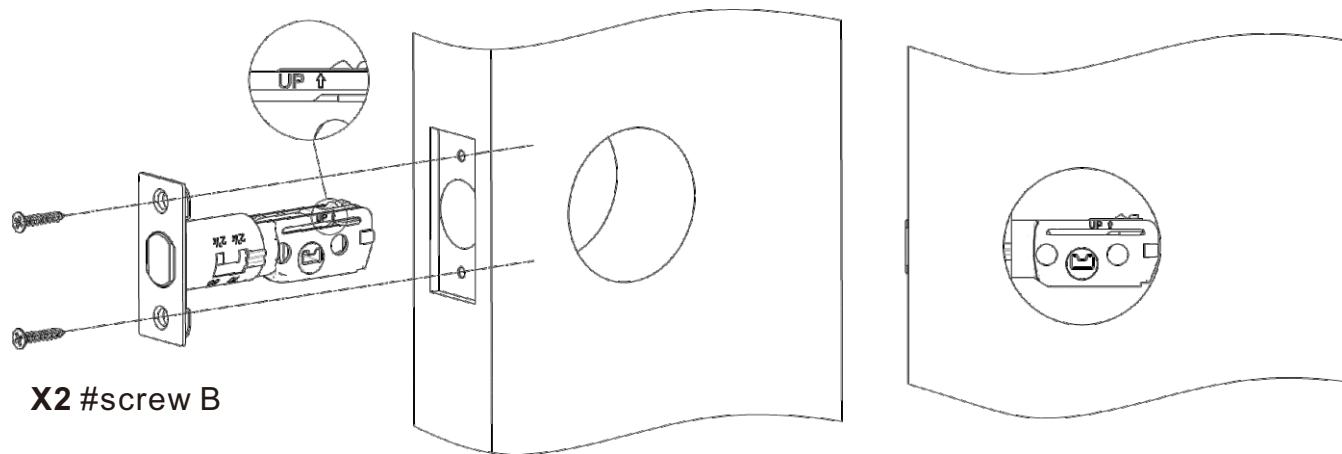


1/ Press the bolt with Thumb.

2/ Twist & Pull as shown.

CAUTION: Backset indication has to fit in inch position.

Step 2 Install Latch

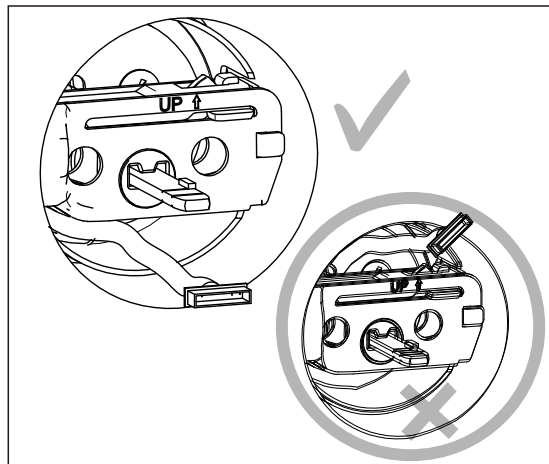
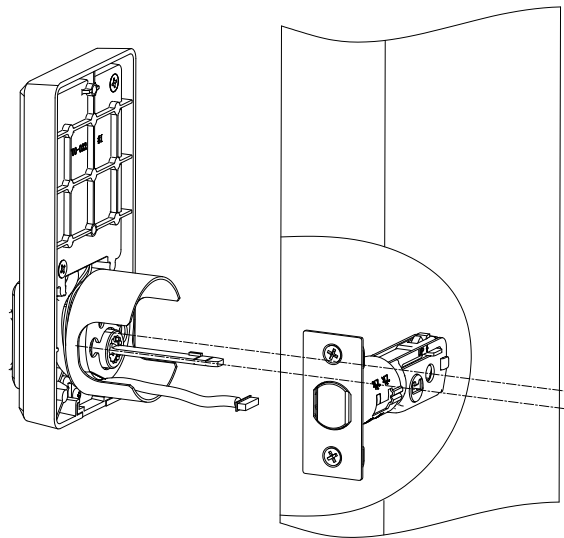


X2 #screw B

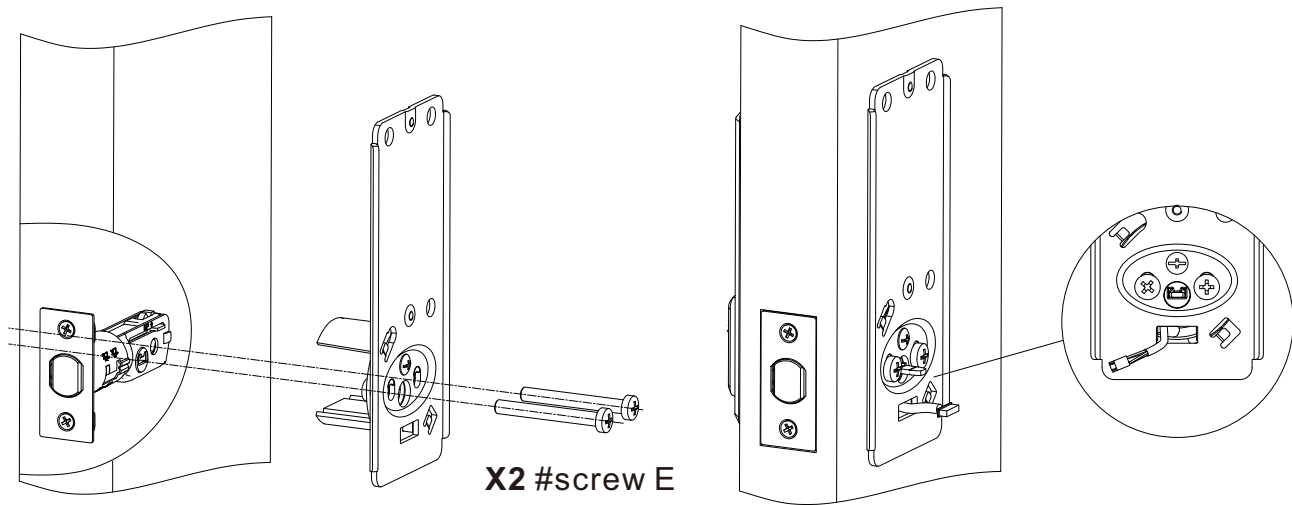
1/ Follow Latch indication UP ↑ Latch bolt inside.

2/ Fix screws. (#screw B)

Step 3 Install Exterior Assembly & Mounting Plate



1/ Install Exterior Assembly. Cylinder tail goes through latch hub in parallel, cable goes through **UNDER** latch.

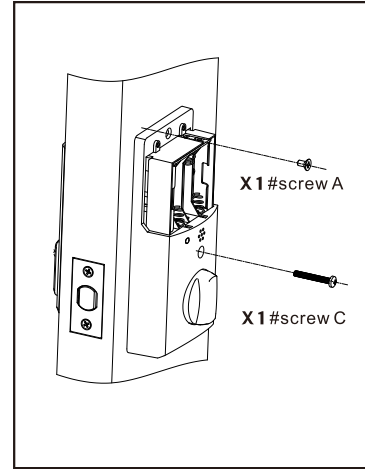
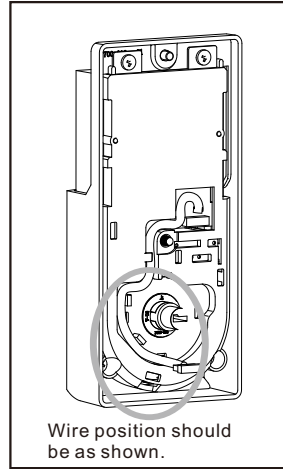
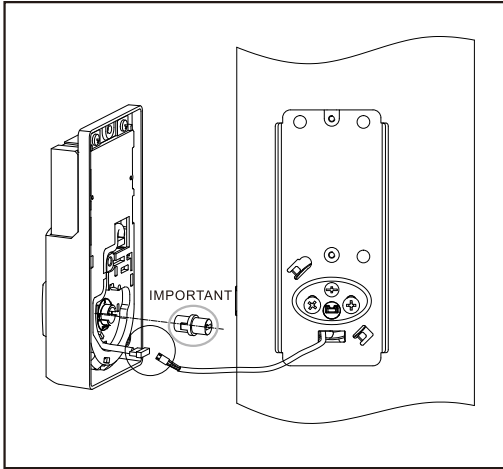


2/ Install Mounting Plate. Cable goes through specified hole on Mounting Plate.

3/ Fix screws. (#screw E)

CAUTION: Keep Exterior Assembly & Mounting Plate parallel with door edge.

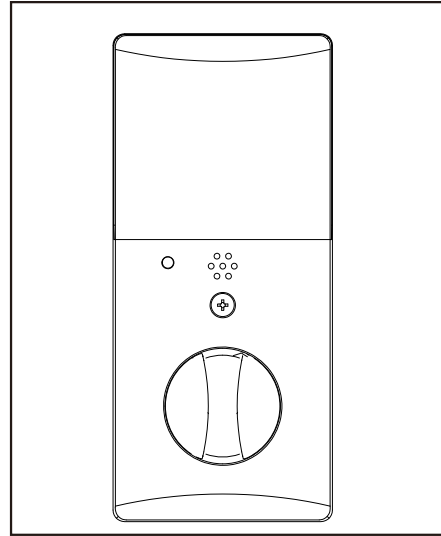
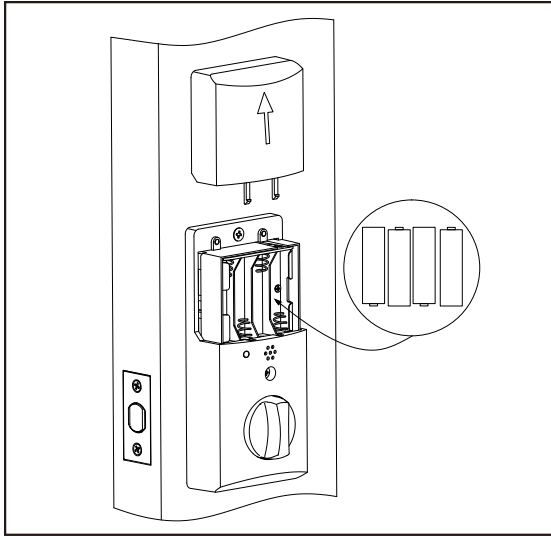
Step 4 Install Interior Assembly



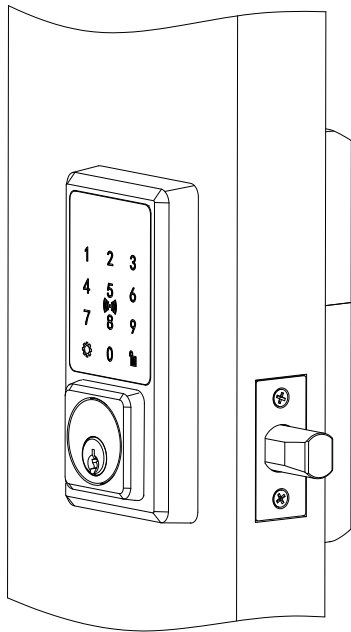
- 1/ Install Rotation Piece in Interior Assembly.
- 2/ Connect cables from exterior assembly and interior assembly. Keep turn of interior assembly Vertical.
- 3/ Fix screws. (#screw A & #screw C)

CAUTION: Mechanical Inspection. Unlock / Lock by key or inside turn smoothly.

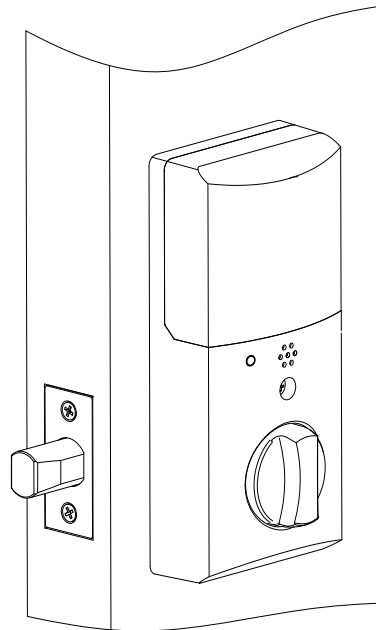
Step 5 Install Battery & Auto Set-Up



- Push up battery cover, install 4pcs AA 1.5V alkaline battery.
- After batteries installation, auto set-up start with buzz. Set-up finish till buzz stop and latch bolt stretch out automatically.
- Put on battery cover.



FRONT

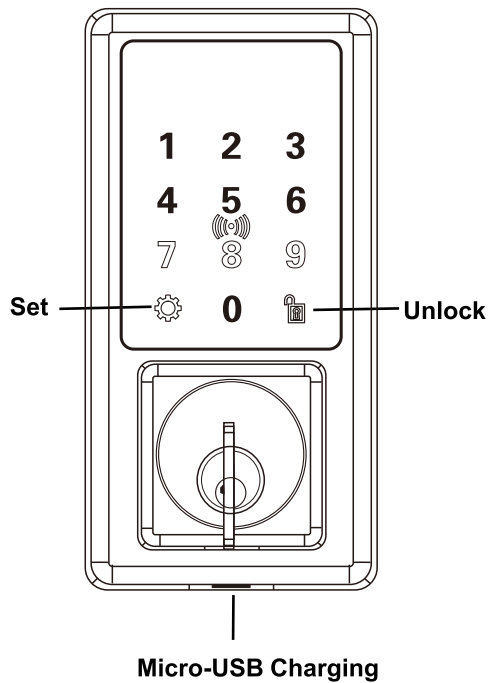


BACK

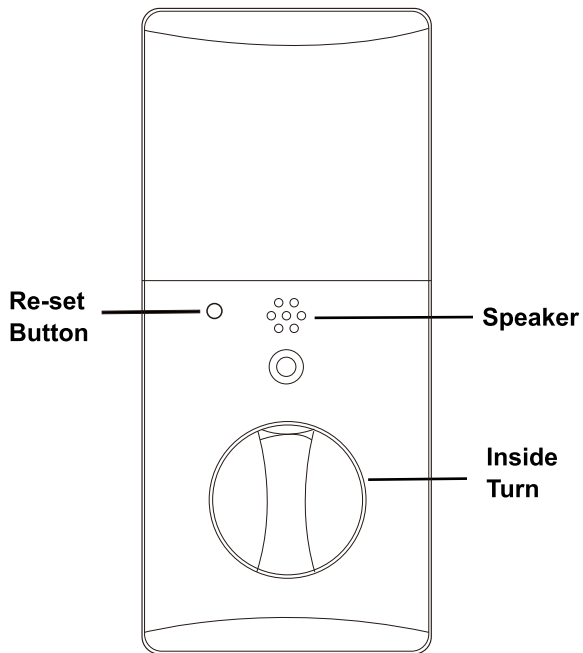
USER MANUAL

DEADBOLT Series

Exterior Assembly




Interior Assembly



UNLOCK

1/ PASSWORD

Touch screen
to activate → Input Password → Press 

Success. Screen off, latch bolt retract, successful tone.

Fail. Wrong password, 3 warning tone, screen flash and off.

CAUTION: Input wrong password 5 times, screen off and cannot be activated till 1 minute.

2/ APP

Z-wave version, unlock by mobile app.

3/ KEY & INSIDE TURN

LOCK

1/ TOUCH SCREEN

2/ AUTO LOCK

Auto lock mode set, auto lock after unlock 12 second.

3/ APP

Z-wave version, lock by mobile app.

4/ KEY & INSIDE TURN

EXTERNAL CHARGE

Low battery warning, 4 warning tone or battery off, connect external power to Micro-USB charging.

PROGRAMMING

PROGRAMMING MODE

Lock Status Only

Method 1

Touch screen to activate → Press  → Press  → Input Master Password → Press 

Method 2

Press "Re-Set" Button  → Input Master Password → Press 


Success. "1" "2" "3" "4" "5" "6" "0"   Light on.

Fail. Wrong master password, 3 warning tone, screen flash and off. Repeat above.

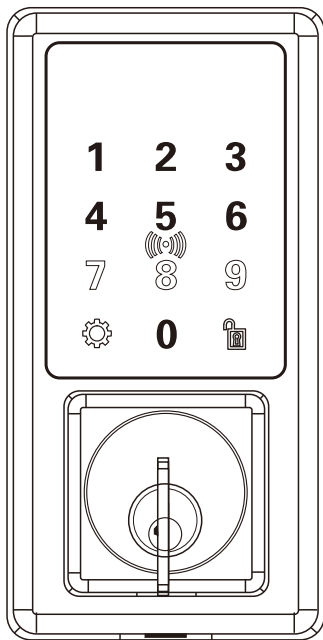
CAUTION

(1) First use or without master password, input factory default code "123456"

(2) Keep your door open during programming in case of operation error causes unable unlock.

(3) Programming Mode, Press  , logout and screen off. During programming steps, press  return to Programming Mode.

PROGRAMMING MODE

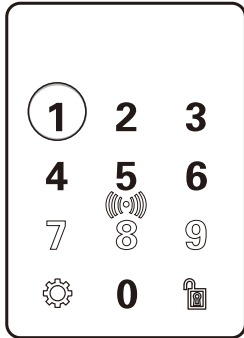


- 1** ADD PASSWORD
- 2** DELETE PASSWORD
- 3** AUTO LOCK SETTING
- 4** TRAVEL MODE SETTING
- 5** TONE CONTROL
- 6** DATE & TIME SETTING
- 0** Z-WAVE CONNECTION

ADD PASSWORD

Step 1

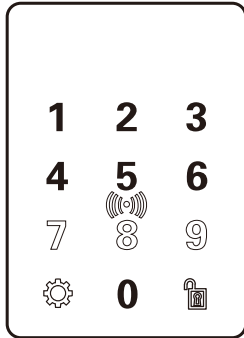
Programming Mode,
Press "1"



Step 2


Input Master ID or User
ID

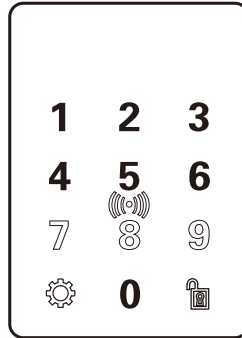
Master ID: 001-009
User ID: 010-230



Step 3

Input password, 4 to 6
digit

4 digit & 5 digit password,
Press  to confirm



Step 4

Repeat Step 3.

Success. Each step,
successful tone. Finish
& return to
Programming Mode.

Fail.
3 warning tone.

Solution for Fail

Wrong ID	Stay Step 2, input correct ID.
Password same as recorded password	Invalid, auto assessment in Step 4, return to Programming Mode. Start from Step 1.
Password less than 4 digit	Stay Step 3, input correct Password.
Repeat Password different from Step 4	Invalid, auto assessment in Step 4, return to Programming Mode. Start from Step 1.

CAUTION

(1) Master ID 001-009, User ID 010-230. Both ID CANNOT be revised.

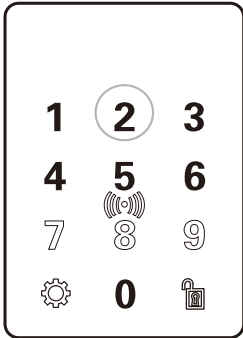
(2) Maximum 9 master. Maximum 221 user.

(3) Step 2, press  , add user password in sequence.

DELETE PASSWORD

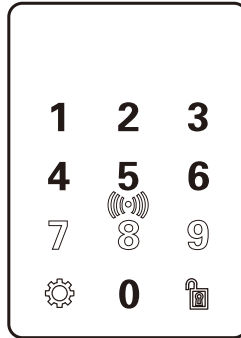
Step 1

Programming Mode,
Press "2"



Step 2

Input Master ID or User ID



Success. Each step, successful tone. Finish & return to Programming Mode.

Fail. 3 warning tone.

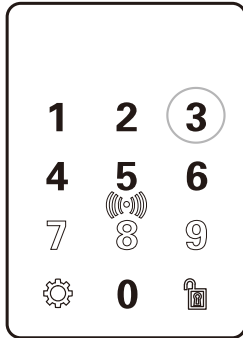
Solution for Fail

Wrong ID or ID haven't been recorded, return to Programming Mode. Start from Step 1.

AUTO LOCK SETTING

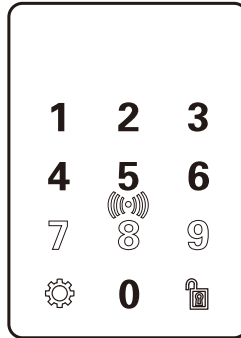
Step 1

Programming Mode,
Press "3"



Step 2

Press "4" turn ON Auto Lock
Press "5" turn OFF Auto Lock



Success. Each step, successful tone. Finish & return to Programming Mode.

Fail. 3 warning tone.

Solution for Fail

Return to Programming Mode.
Start from Step 1.

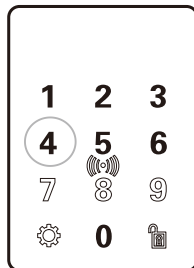
CAUTION

Auto Lock Mode set, auto lock after unlock 12 second.

TRAVEL MODE SETTING

Step 1

Programming Mode,
Press "4"



Success. Successful tone. Finish & return to Programming Mode.

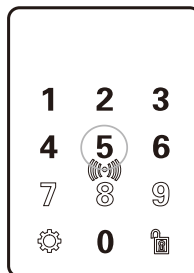
CAUTION

**Travel Mode set, only master password can unlock.
After unlock, Logout Travel Mode.**

TOUR CONTROL

Step 1

Programming Mode,
Press "5"



Success. Successful tone. Finish & return to Programming Mode.

CAUTION

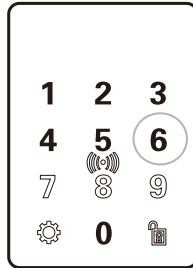
(1) Turn OFF tone means, button tone, successful tone and warning tone All OFF. NOT SUGGEST TURN OFF.

(2) This operation means switch Tone ON or OFF.

DATE & TIME SETTING

Step 1

Programming Mode,
Press “6”



Step 2

According to current date and time, input 14 digit

Example: 20181112152905

Date: Nov. 12, 2018 Time: 15:29:05

Success. Each step, successful tone. Finish & return to Programming Mode.

Fail. 3 warning tone, auto assessment for date & time.

Solution for Fail Return to Programming Mode, start from Step 1.

CAUTION

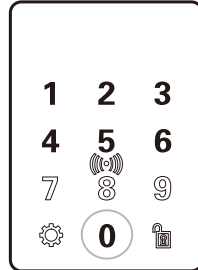
(1) Apply 24-hour system.

(2) Z-wave connected, date & time follow local internet.

Z-WAVE CONNECTION

Step 1

Programming Mode,
Press "0"



Follow Mobile APP indication

Reference Gateway: Vera, Wink, Fibara

RESTORE FACTORY DEFAULTS

Press "Re-Set" button  till 6 warning tone and successful tone. Restore finish.

CAUTION

(1) Restore factory defaults, delete all recorded password. Factory default code "123456" Valid.

(2) Restore factory defaults, Z-wave connected information still Valid.

